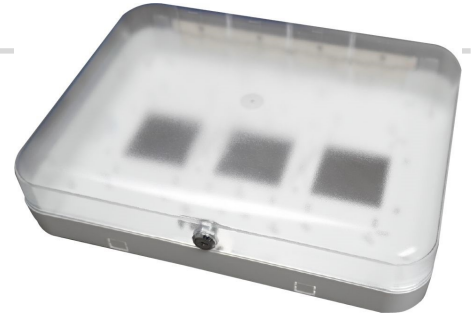




## MECHANICAL SPECIFICATIONS

Size: 12" x 16" x 4" (304.8x406.4x101.6mm)  
Color: White  
Material: Polycarbonate  
Lock Type: Key Lock  
Mounting Method: Wall mount. Multiple holes available for various configurations.  
Mounting feature: Knockouts available on the sides for raceway and conduit



## ENVIRONMENTAL SPECIFICATIONS

Installation Environment: Indoor  
Operating Temperature: -20 to 240°F (-28 to 115°C)



## INCLUDED HARDWARE

2 keys, 2 mounting brackets



Open with included hardware



Side View closed with Knockouts



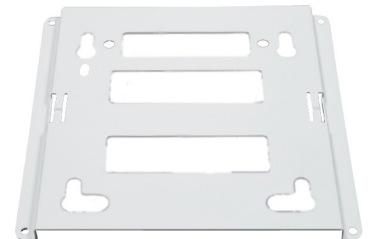
Mounting Bracket



Opened



Side View open with Knockouts



Universal Mounting Plate