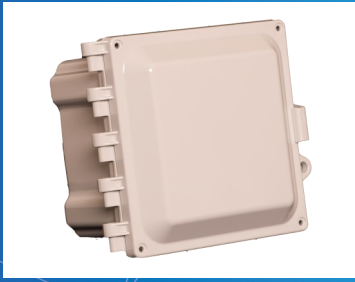




6X6X4 NONCONFIGURED POLYCARBONATE ENCLOSURE WITH SOLID DOOR AND KEY LOCK



The AccelTex Solutions polycarbonate enclosure protects any enterprise-class AP from environmental threats and tampering. Purpose built for enterprise applications, this aesthetically pleasing enclosure is inconspicuous in an indoor application and durable enough to provide NEMA 6P protection in an outdoor environment.

Part Number: ATS-664P-S-K-NC



MECHANICAL SPECIFICATIONS

Size: 6" H x 6" W x 4" D (154.2 mm H x 154.2 mm W x 101.6 mm D)
Weight: 2.5 lbs (1.13 kg)
Color: Light Grey
Material: Polycarbonate
Door Type: Solid
Lock Type: Key Lock Plus Latch with Integrated Pad Lockable Hasp
Antenna Connection Holes: 0
Hole Size: None
Cord Grip: No
Equipment Installation: Not Included
Enclosure Installation: Mounting Feet



ENVIRONMENTAL SPECIFICATIONS

Installation Environment: Indoor/Outdoor
Environmental Protection: NEMA 6P, 4X, 4, 3R, 122; IP68
Operating Temperature: -20 to 240°F (-28 to 115°C)

WARRANTY



2 Year Limited Warranty